

Skills Development Scotland

SSC Event - Edinburgh

Susan Rees

Training Partner – Edinburgh, Lothian, Fife & Borders

Tuesday 10th March 2009

Skills Development Scotland (SDS)

|||| *Launched April 2008*

|||| *4 merged organisations:*

Careers Scotland

Scottish University for Industry

Scottish Enterprise – Skills Elements

Highlands & Islands Enterprise – Skills Elements

|||| *Benefits of national scale and local delivery*

|||| *1,500 staff*

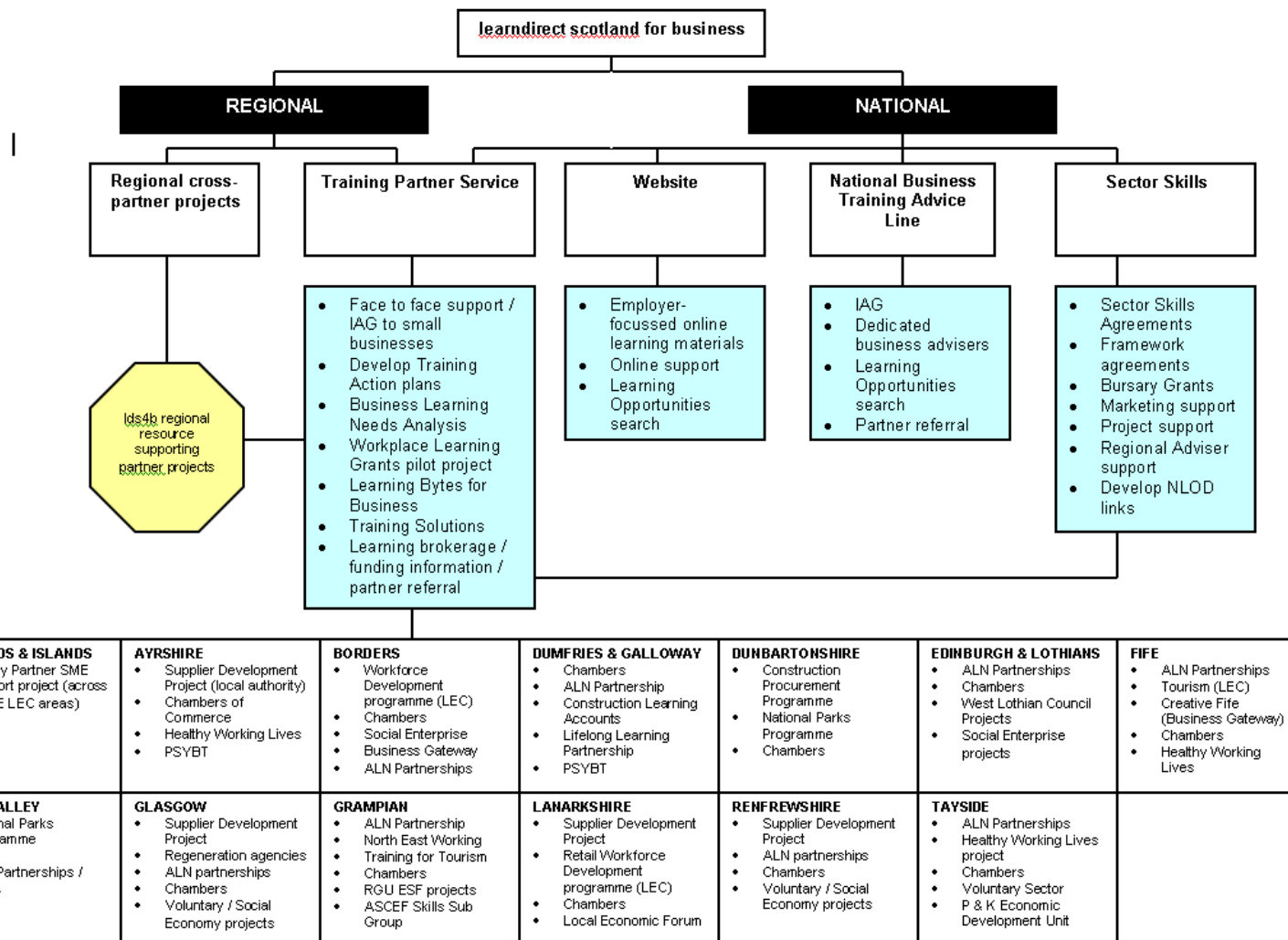
Resources and Products

- ||| 38 Careers Scotland centres, 18 outreach centres***
- ||| 500+ learndirect scotland branded learning centres***
- ||| Career guidance and employability products, services***
- ||| Learndirect scotland helpline and website***
- ||| Skills programmes***
- ||| National Learning Opportunities Database (NLOD)***
- ||| Learner Accounts (ILA Scotland)***
- ||| Learndirect scotland for business – dedicated SME service***

Our Aim



To encourage and assist small businesses to become more competitive through employee training and development



- |||| *Promote the benefits of planned and effective workforce development*
- |||| *Help companies source the training which best meets their business needs*
- |||| *Provide 'one stop shop' service: advise on other sources of help, such as funding, national programmes and business support initiatives/networks*
- |||| *Promote, support and encourage good practice*
- |||| *Measure the impact of learning interventions*

515 branded learning centres

300,000 learners supported annually by the LC network

around 30,000 online learner registrations

9,766 SMEs received 1:1 support

97% of SMEs would recommend our Training Partners to others

70% awareness of learndirect scotland brand

408,000 calls to LDS / LDS4B helplines

254,000 calls to the ILA Scotland helpline

18,000 calls to the Big Plus helpline

64,000 individual learning accounts opened

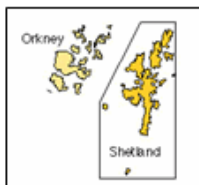
31,000 courses booked with ILA Scotland funding

|||| *Reaching and Supporting SMEs*

|||| *training partners*

|||| *resources and services*

|||| *partnership working*



Training Partner
network by
**LOCAL
AUTHORITY
AREA**

Contract agreement

Argyll and Bute
Highland
Moray
Na h-Eileanan Siar
(Western Isles)
Orkney Islands
Shetland Islands

Gill Blair

Clackmannanshire
East Dunbartonshire
Falkirk
North Lanarkshire
South Lanarkshire
Stirling
West Dunbartonshire

Keith Spalding

Aberdeenshire
Angus
City of Aberdeen
City of Dundee
Perth and Kinross

James Burns

City of Glasgow
East Renfrewshire
Inverclyde
Renfrewshire

Susan Rees

City of Edinburgh
East Lothian
Fife
Midlothian
West Lothian

Lindsey Mason

Dumfries & Galloway
East Ayrshire
North Ayrshire
Scottish Borders
South Ayrshire

|||| *Short – an hour or so.*

|||| *Timely*

|||| *Cost effective*

|||| *Relevant – focussed on skills to enhance your business*

EXAMPLE LEARNING OPTIONS

Training Gap	Course Title	Provider	Delivery Mode	Duration (Days)	Location	Cost per Learner	Start Date	Contact details	See page number	Comments
Management	ILM Introductory Certificate in First Line Management	Darnley Career Academy	Self study	Up to 24 months	-	£529	Flexible	0800 678 1053	1 - 2	
	ILM Certificate in First Line Management	National Extension College	Self study	Approx 160 hours	-	£895	Flexible	0800 389 2839	3 - 4	Introductory Certificate also available. ILA200 eligible.
	ILM Introductory Certificate in First Line Management	GO Training (Glasgow)	Part time day	4 days over 4 weeks	Glasgow	£960	14 Jun or 11 Sep 07	0845 602 1249	-	No course details.
Health & Safety	IOSH Managing Safely	AD Services	Self study	Flexible	-	£449	Flexible	George McKenna, 01698 307171	5 - 6	ILA200 eligible.
	IOSH Managing Safely	EDETA (Training Services)	Part time day	4 days over 2 weeks	Edinburgh	£500 + VAT	18-Sep-07	0131 454 4840	7 - 8	ILA200 eligible.
	REHIS Elementary Health and Safety	ME Technologies	Short full time	1 day	Dundee	£50 + VAT	Subject to demand	Charlene Joyce, 0141 440 6471	9 - 10	ILA200 eligible.
	Introduction to Health and Safety	Support Training - Perth	Flexible (drop-in)	Approx 2 hours	Perth	£60	Flexible	Sheila Thompson, 01738 449894	11 - 12	ILA200 eligible.
Information Technology - ECDL	ECDL	Perth College	Flexible (drop-in)	Approx 150 hours	Perth	£250	Flexible	01738 877230	13 - 14	ILA100 eligible.
	ECDL	University of Abertay Dundee	Self study	Flexible	-	£210	Flexible	Lesley Balfour, 01382 308080	15 - 16	Optional drop-in tutorials on Wednesday afternoons. ILA100
	ECDL	Support Training - Perth	Flexible (drop-in)	Flexible	Perth	£450	Flexible	Jude Munro, 01738 449894	17 - 18	ILA100 eligible.
Time Management	Developing Personal Effectiveness	Dundee College	Self study	Approx 40 hours	-	£84	Flexible	01382 834851	19	ILA100 eligible.
	Time Management	GoAhead Training	Short full time	1 day	Perth	£60	Subject to demand	01382 623261	20 - 21	
	Time Management	Family Learning House	Short full time	Half day	Dundee	£40	28-Jul-07	Jim Menzies, 01382 454608	22 - 23	
Negotiation Skills	Effective Negotiation Skills	Cosensa Learning and Development	Short full time	1 day	Edinburgh	£245 + VAT	20-Sep-07	AnnMarie Briscoe, 02890 664443	24 - 25	

The most requested learning needs we source

IT skills

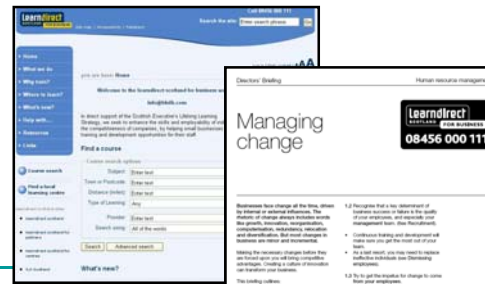
Health & Safety

Managing People

Finance

Personal development

- ||| Course searches
- ||| Directors' briefings
- ||| Workbooks
- ||| Online learning
- ||| Better Business Toolkit
- ||| Training action plans



-
- ||| *we have a framework identifying our key products, resources and networks which forms the basis of our individual partnerships with each SSC*
 - ||| *it allows both parties to align their priorities for workforce development and lifelong learning and collaborate most productively*
 - ||| *ensures that our formal agreement through the Sector Skills Agreement, reflects the challenges of skills enhancement in the workplace and agrees joint approaches to address these challenges*

Working with SSCs - Example

- |||| Ids and Lantra have an innovative partnership capitalising on Lantra's progressive approach to IAG*
- |||| we have worked with Lantra to identify and register up to 100 new sector-specific providers*
- |||| Lantra are working towards an integrated website through which visitors can access a competency framework for specific subsectors.*
- |||| Through this, the learner/adviser/employer can directly access provision available to meet skills needs identified. This is provided by our National Learning Opportunities Database*
- |||| This 'one stop shop' facility was launched by the Minister on 22 June at the Royal Highland Show.*