



Continuous professional learning (CPL) plays a key role in supporting and improving day-to-day practice.



1

All registered social service workers are responsible for improving their knowledge and skills through continuous professional learning (CPL).

2

You need to complete a set number of hours of learning during each registration period.



3

It's not just about formal training courses – it can be every day learning in your workplace, reading, supervision, Open Badges and more.

4

Record your CPL as you go along in the way that suits you best, like a learning log, your employer's system or the MyLearning app.

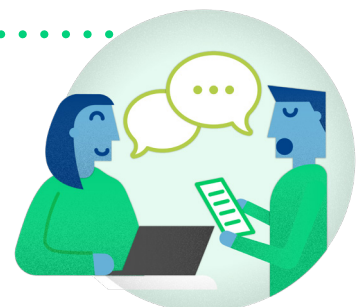


5

When your registration renews, we'll ask you to confirm you've kept a record and completed the required hours.

6

If we choose to sample your CPL, we may ask you to review your learning with your supervisor.



To find out more visit [sssc.uk.com/cpl](https://www.sssc.uk.com/cpl)